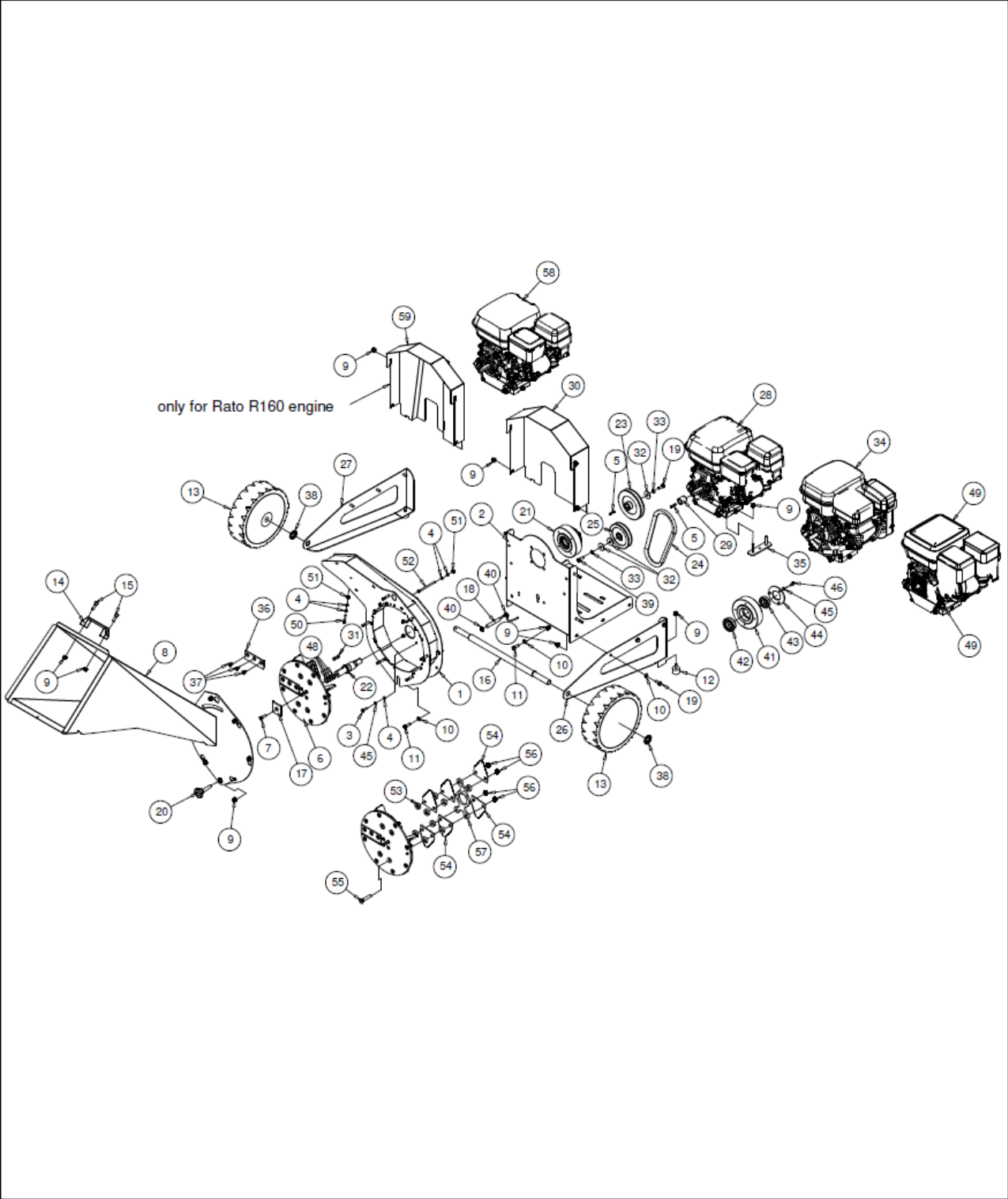




ESPLOSO RICAMBI BIO TRITURATORE MG 500

SPARE PARTS LIST BIO-SHREDDER MG 500



| N° | Code | Descrizione Description | Description Beschreibung | Descripción Beschrijving | Qt |
|----|---------------|--|---|--|----|
| 1 | R070060 | CORPO MACCHINA CORPS DE LA MACHINE | MACHINE BODY MASCHINENKÖRPER | MACHINE LICHAAM CUERPO MÁQUINA | 1 |
| 2 | R070036 | SUPPORTO SUPPORT | SUPPORT HALTER | STEUN SOSTÉN | 1 |
| 3 | V620Z | VITE VIS | SCREW SCHRAUBE | BOUT TORNILLO | 4 |
| 4 | RP6Z | RONDELLA RONDELLE | WASHER SCHEIBE | RING ARANDELA | 12 |
| 5 | 6604B | LINGUETTA CLAVETTE | KEY HOLKEIL | SPIE CHAVETA | 2 |
| 6 | R070069 | ROTORE CON MARTELLI ROTOR AVEC MARTEAUX | ROTOR WITH HAMMERS ROTOR MIT HÄMMERN | ROTOR MET HAMERS ROTOR CON MARTILLOS | 1 |
| 7 | VSP830 | VITE VIS | SCREW SCHRAUBE | BOUT TORNILLO | 1 |
| 8 | R070067 | TRAMOGGIA TRÉMIE | HOPPER TRICHTER | INVOERTRECHTER TOLVA | 1 |
| 9 | M8AUTZF | DADO ECROU | NUT MUTTER | MOER TUERCA | 30 |
| 10 | RP8Z | RONDELLA RONDELLE | WASHER SCHEIBE | RING ARANDELA | 11 |
| 11 | V825Z | VITE VIS | SCREW SCHRAUBE | BOUT TORNILLO | 5 |
| 12 | D04020 | ANTIVIBRANTE SUPPORT ÉLASTIQUE | SILENT BLOCK SILENTBLOCK | SILENT BLOCK SILENT-BLOCK | 2 |
| 13 | NGR0450A | RUOTA ROUE | WHEEL RAD | WIEL RUEDA | 2 |
| 14 | M443/140N | MANIGLIA POIGNÉE | HANDLE HANDGRIFF | HANDVAT AGARRADERA | 1 |
| 15 | V825TCEIZ | VITE VIS | SCREW SCHRAUBE | BOUT TORNILLO | 2 |
| 16 | R070022 | ASSALE ESSIEU | AXLE ACHSE | AS EJE | 1 |
| 17 | R070009 | PIATTO PLAQUE | PLATE PLATTE | PLAAT PLANCHA | 1 |
| 18 | NGR0661A | SENSORE CAPTEUR | SENSOR SENSOR | SENSOR SENSOR | 1 |
| 19 | V820Z | VITE VIS | SCREW SCHRAUBE | BOUT TORNILLO | 7 |
| 20 | NGR0545A | VOLANTINO VOLANT MANUEL | HANDWHEEL HANDRAD | HANDWIEL VOLANTE MANUAL | 1 |
| 21 | R070039 | GIUNTO ACCOUPEMENT | JOINT KUPPLUNG | VERBINDING JUNTA | 1 |
| 22 | R070033 | ALBERO ARBRE | SHAFT WELLE | AANDRIJFAS ARBOL | 1 |
| 23 | R900017 | PULEGGIA POULIE | PULLEY RIEMENSCHIEBE | RIEMSCHIJF POLEA | 1 |
| 24 | SPA 732 | CINGHIA SPA732 COURROIE SPA732 | BELT SPA732 KEILRIEMEN SPA732 | V-SNAAR SPA732 CORREA SPA732 | 1 |
| 25 | R900019 | PULEGGIA POULIE | PULLEY RIEMENSCHIEBE | RIEMSCHIJF POLEA | 1 |
| 26 | R070043 | SUPPORTO DX SUPPORT DROIT | RIGHT SUPPORT RECHTER HALTER | RECHTS STEUN SOSTÉN DERECHO | 1 |
| 27 | R070042 | SUPPORTO SX SUPPORT GAUCHE | LEFT SUPPORT LINKER HALTER | LINKS STEUN SOSTÉN IZQUIERDO | 1 |
| 28 | MOTORE H HP55 | MOTORE HONDA 5,5 HP GX MOTEUR HONDA 5,5 HP GX | HONDA 5,5 HP ENGINE GX HONDA 5,5 HP MOTOR GX | MOTOR HONDA 5,5 HP GX MOTOR HONDA 5,5 HP GX | 1 |
| 29 | R900020 | DISTANZIALE ENTRETOISE | DISTANCE RING Distanzring | AFSTANDSRING ANILLO DISTANCIADOR | 1 |
| 30 | R070041 | CARTER PROTECTION | PROTECTION SCHUTZ | BESCHERMING PROTECCIÓN | 1 |
| 31 | B8730 | LINGUETTA CLAVETTE | KEY HOLKEIL | SPIE CHAVETA | 1 |
| 32 | RP832Z | RONDELLA RONDELLE | WASHER SCHEIBE | RING ARANDELA | 3 |
| 33 | RE8Z | RONDELLA RONDELLE | WASHER SCHEIBE | RING ARANDELA | 2 |
| 34 | MOTOREEX17HP6 | MOTORE ROBIN 6 HP MOTEUR ROBIN 6 HP | ROBIN 6 HP ENGINE ROBIN 6 HP MOTOR | MOTOR ROBIN 6 HP MOTOR ROBIN 6 HP | 1 |

| N° | Code | Descrizione Description | Description Beschreibung | Descripción Beschrijving | Qt |
|----|------------|--|---|--|----|
| 35 | R900027 | PIASTRA PLAQUE | PLATE PLATTE | PLAAT PLANCHA | 2 |
| 36 | R070007 | LAMA COUTEAU | BLADE MESSER | MES HOJA | 1 |
| 37 | VSP814 | VITE VIS | SCREW SCHRAUBE | BOUT TORNILLO | 3 |
| 38 | RDFFP20 | RONDELLA RONDELLE | WASHER SCHEIBE | RING ARANDELA | 2 |
| 39 | V5/16"1" | VITE VIS | SCREW SCHRAUBE | BOUT TORNILLO | 1 |
| 40 | RZ12 | RONDELLA RONDELLE | WASHER SCHEIBE | RING ARANDELA | 2 |
| 41 | R070031 | SUPPORTO SUPPORT | SUPPORT HALTER | STEUN SOSTEN | 1 |
| 42 | 6006-2RSR | CUSCINETTO COUSSINET | BEARING LAGER | LAGER COJINETE | 1 |
| 43 | 6005-2RSR | CUSCINETTO COUSSINET | BEARING LAGER | LAGER COJINETE | 1 |
| 44 | R900016 | COPERCHIO COUVERCLE | COVER DECKEL | DEKSEL TAPA | 1 |
| 45 | RE6Z | RONDELLA RONDELLE | WASHER SCHEIBE | RING ARANDELA | 7 |
| 46 | V615Z | VITE VIS | SCREW SCHRAUBE | BOUT TORNILLO | 3 |
| 47 | NGR0616A | MOTORE SUBARU 4,5 HP MOTEUR SUBARU 4,5 HP | SUBARU 4,5 HP ENGINE SUBARU 4,5 HP MOTOR | MOTOR SUBARU 4,5 HP MOTOR SUBARU 4,5 HP | 1 |
| 48 | NGR0646A | DISTANZIALE ENTRETOISE | DISTANCE RING DISTANZRING | AFSTANDSRING ANILLO DISTANCIADOR | 4 |
| 49 | NGR0832A | MOTORE HONDA 5,5 HP GP MOTEUR HONDA 5,5 HP GP | HONDA 5,5 HP ENGINE GP HONDA 5,5 HP MOTOR GP | MOTOR HONDA 5,5 HP GP MOTOR HONDA 5,5 HP GP | 1 |
| 50 | V635Z | VITE VIS | SCREW SCHRAUBE | BOUT TORNILLO | 1 |
| 51 | M6AUTZ | DADO ECROU | NUT MUTTER | MOER TUERCA | 4 |
| 52 | V690TCEIZ | VITE VIS | SCREW SCHRAUBE | BOUT TORNILLO | 3 |
| 53 | R070073 | DISTANZIALE MARTELLI ENTRETOISE MARTEAUX | HAMMERS DISTANCE RING DISTANZRING HÄMMER | HAMERS AFSTANDSRING ANILLO DISTANCIADOR MARTILLOS | 8 |
| 54 | NGR0925A | MARTELLO MARTEAU | HAMMER HAMMER | HAMER MARTILLO | 6 |
| 55 | VSP1055 | VITE VIS | SCREW SCHRAUBE | BOUT TORNILLO | 4 |
| 56 | M10AUTZ-B- | DADO ECROU | NUT MUTTER | MOER TUERCA | 4 |
| 57 | R070072 | SUPPORTO ROTORE SUPPORT ROTOR | ROTOR SUPPORT ROTOR HALTER | ROTOR STEUN SOSTÉN ROTOR | 1 |
| 58 | NGR0987A | MOTORE RATO R160 MOTEUR RATO R160 | RATO R160 ENGINE RATO R160 MOTOR | MOTOR RATO R160 MOTOR HONDA 5,5 HP GX | 1 |
| 59 | R070082 | CARTER PROTECTION | PROTECTION SCHUTZ | BESCHERMING PROTECCIÓN | 1 |